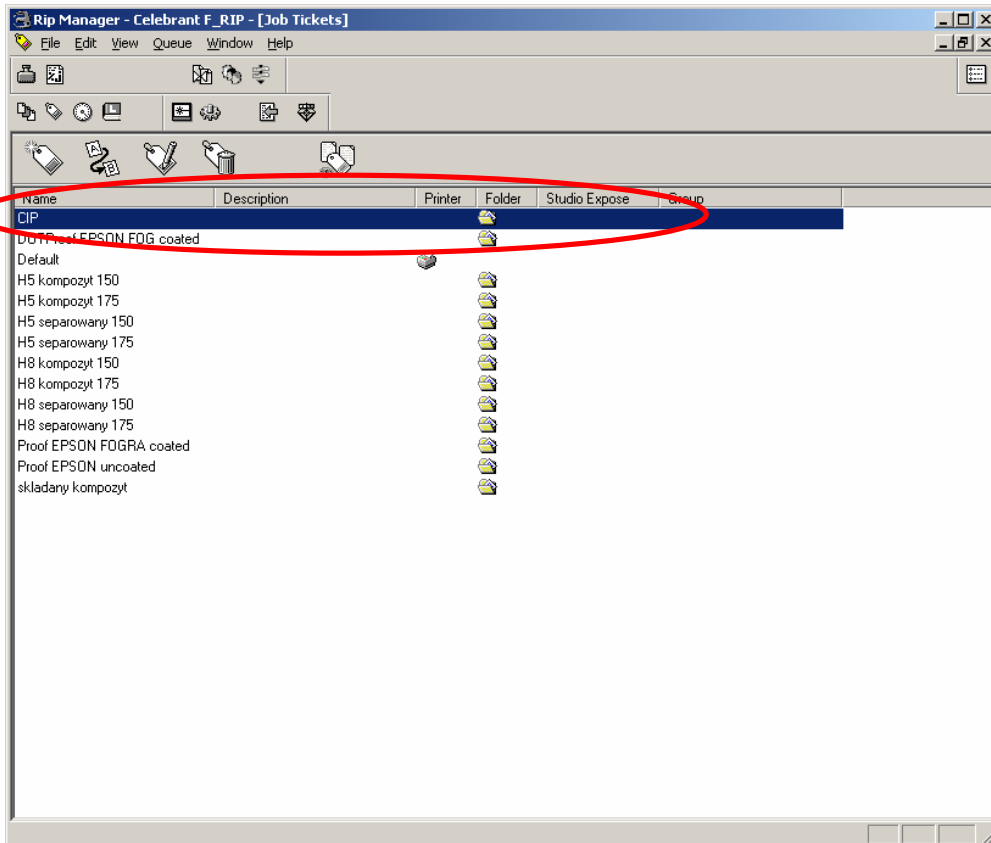


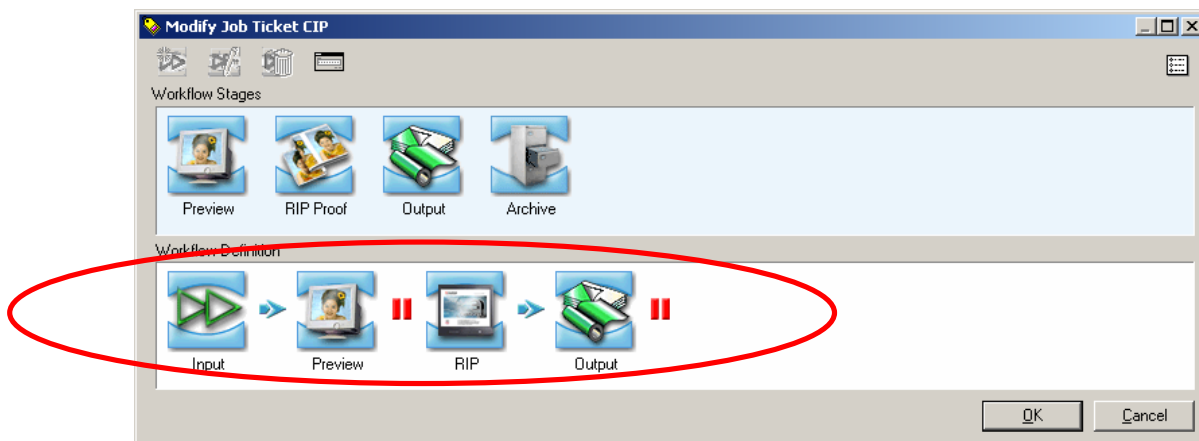
# Workflow setup Fuji CelebraNT 1-Bit TIFF for InkzoneBox / DI-Plot

Refers to the versions  
CelebraNT 6.x

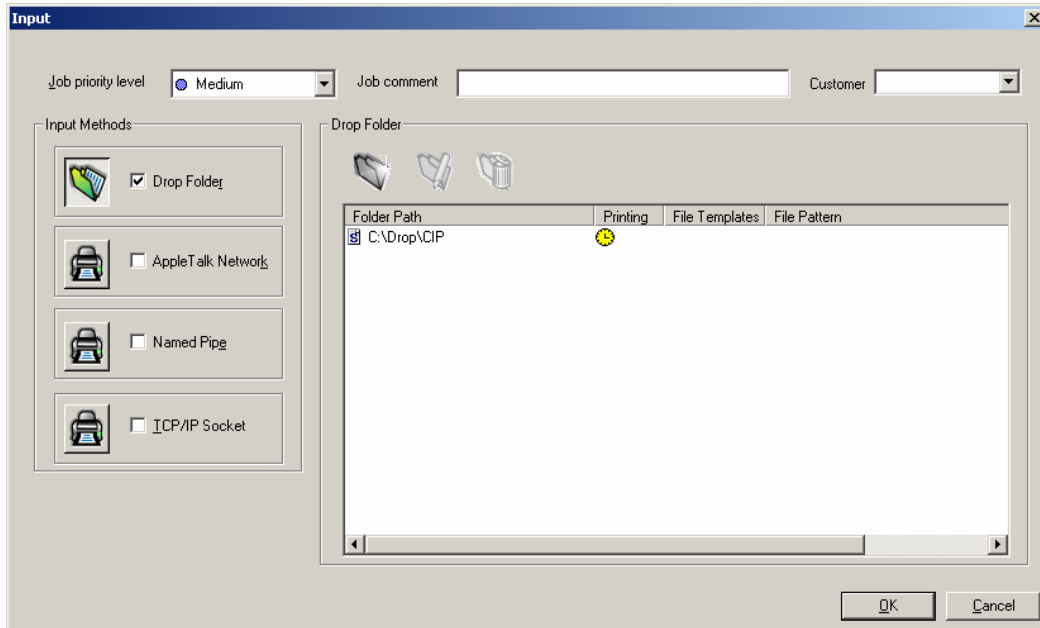
1. Create a Jobticket for Output 1-Bit TIFF



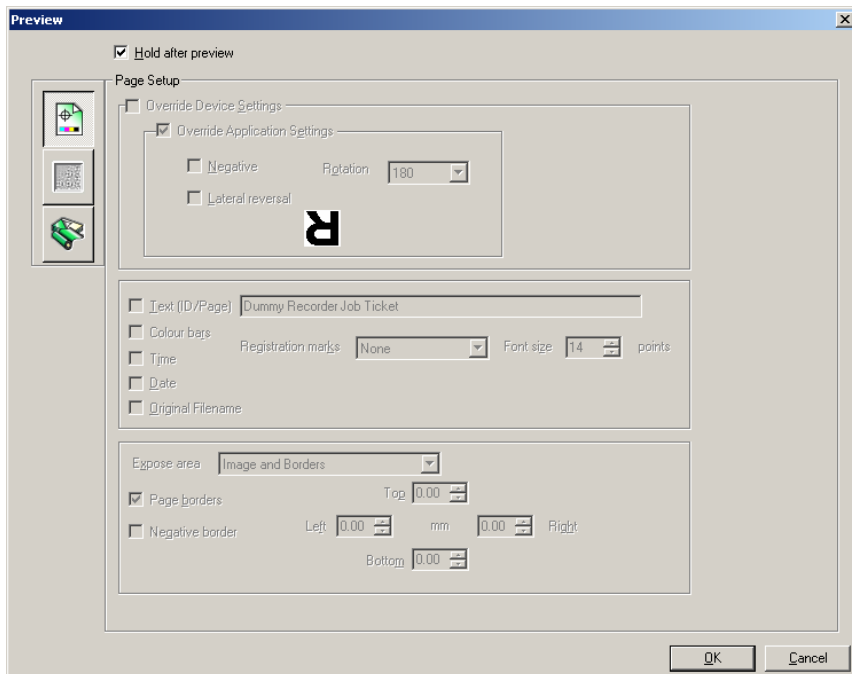
2. Create the workflow like



### 3. Input stage



### 4. Preview stage

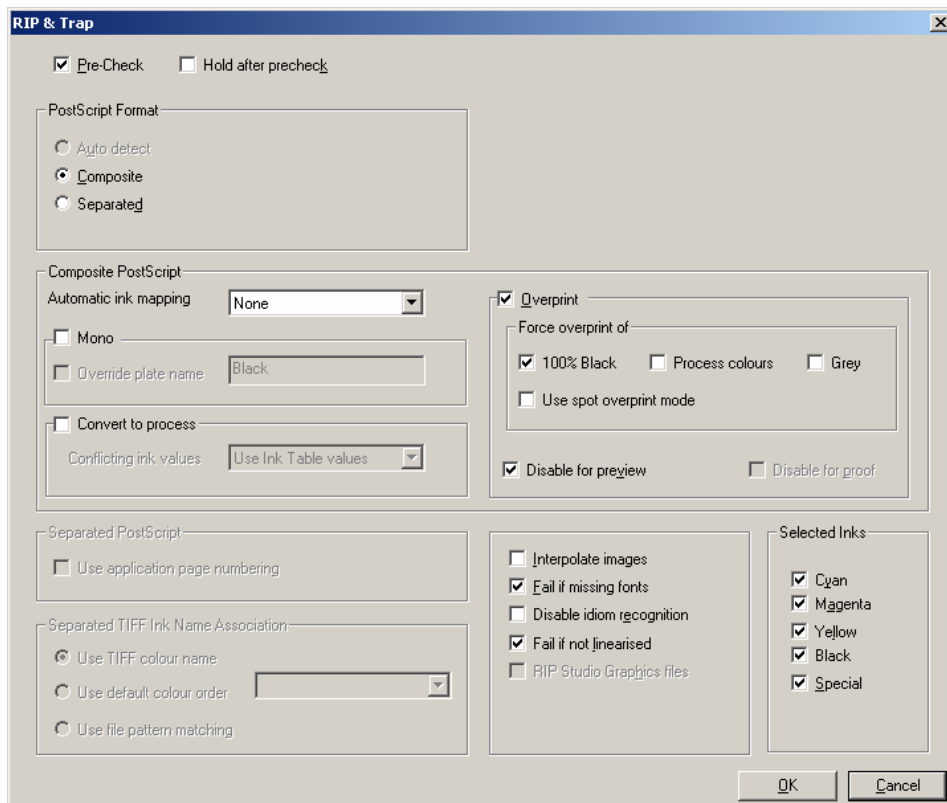
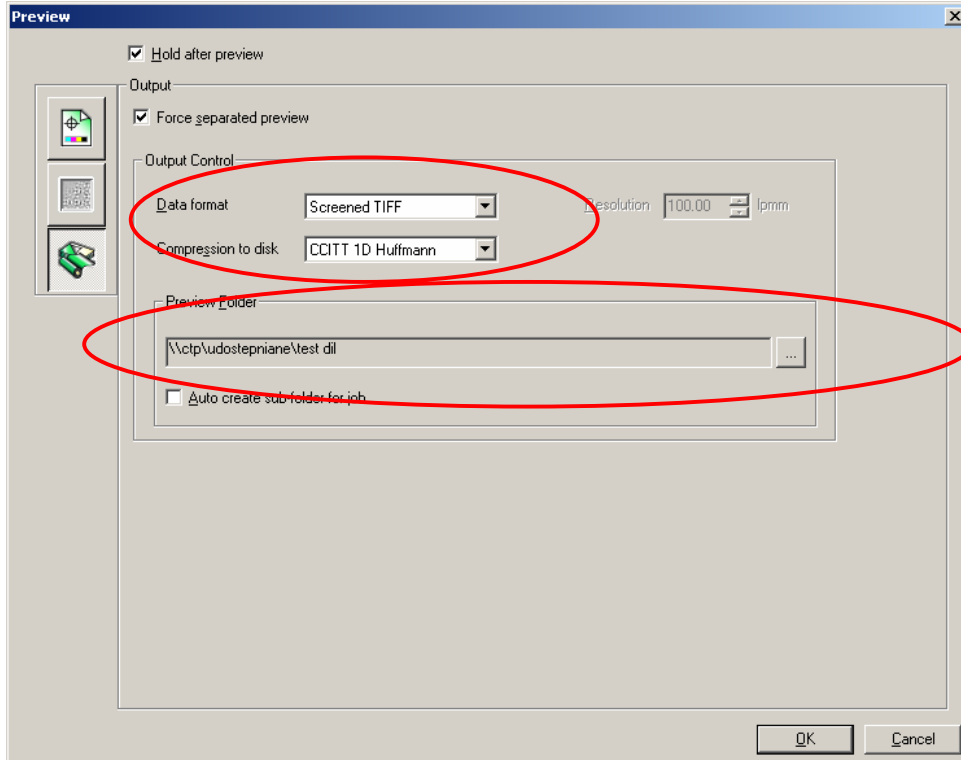


**Important**

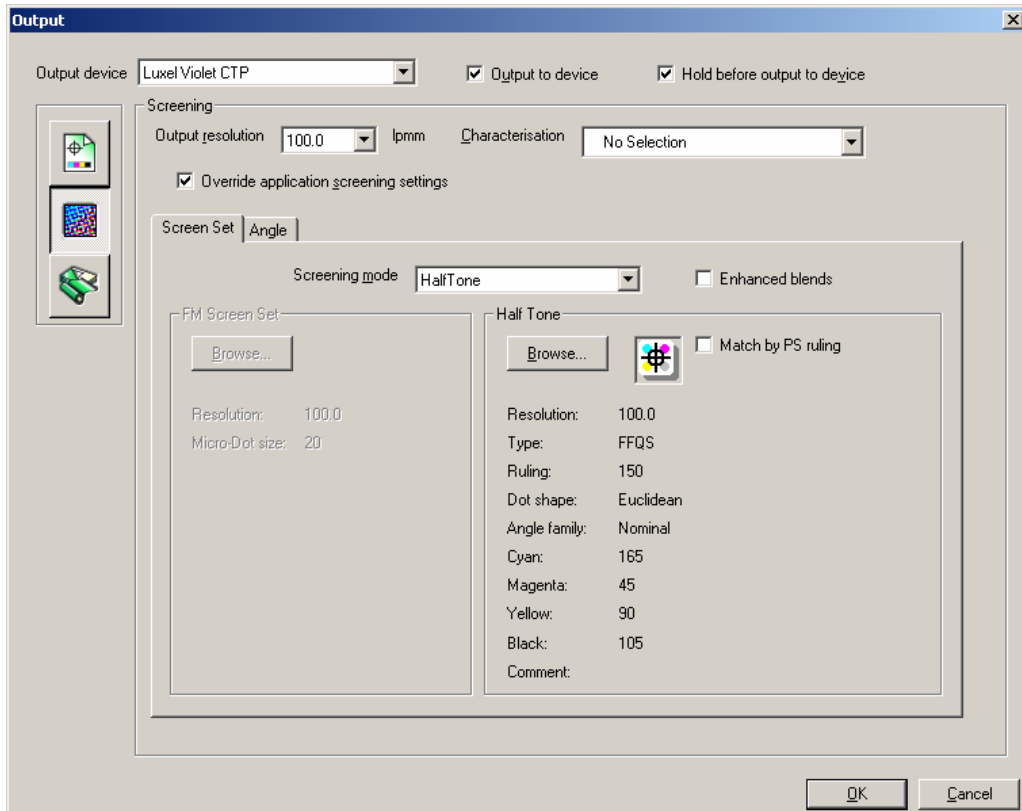
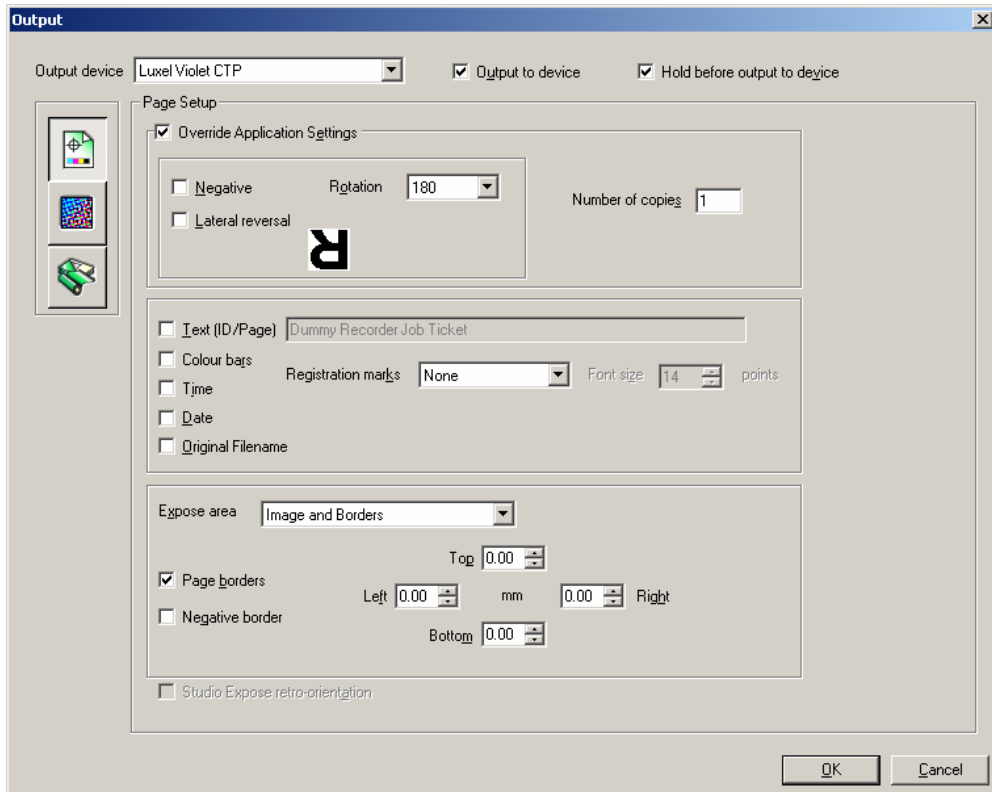
Data format = Screened TIFF

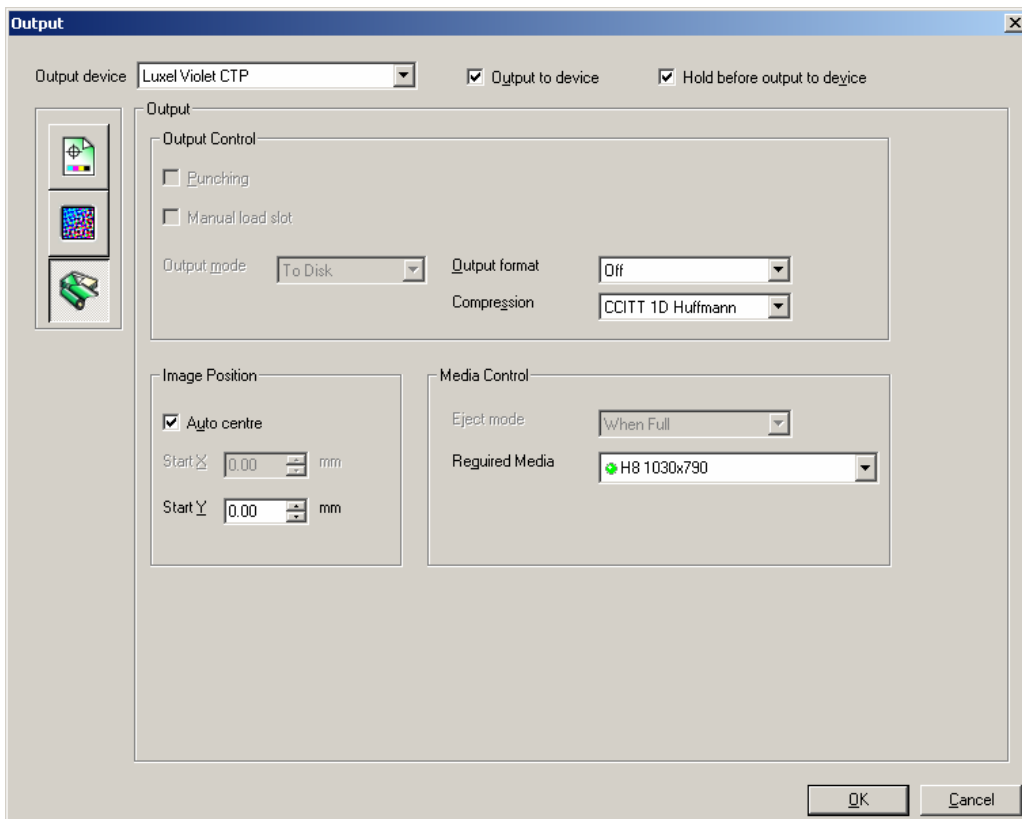
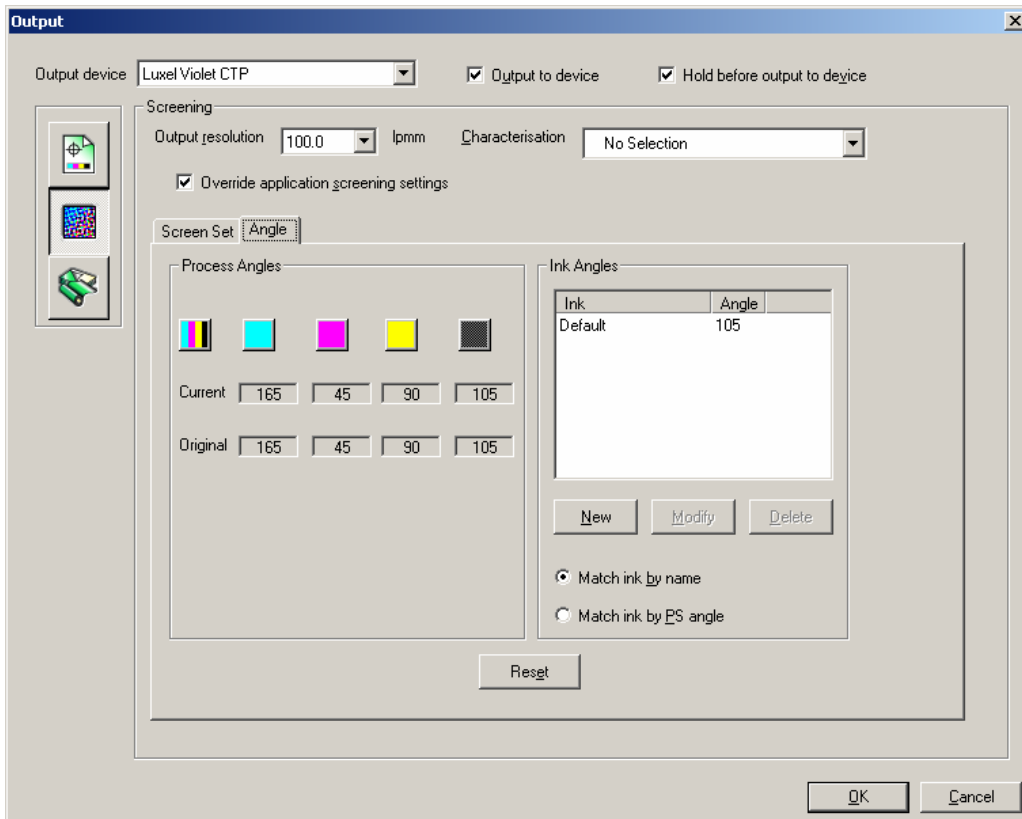
Compression to disk = CCITT 1D Huffman

Folder = the location where DI-Plot will read the 1-Bit tiff files



## 5. Output like for CTP





## 6. RIP like for CTP

