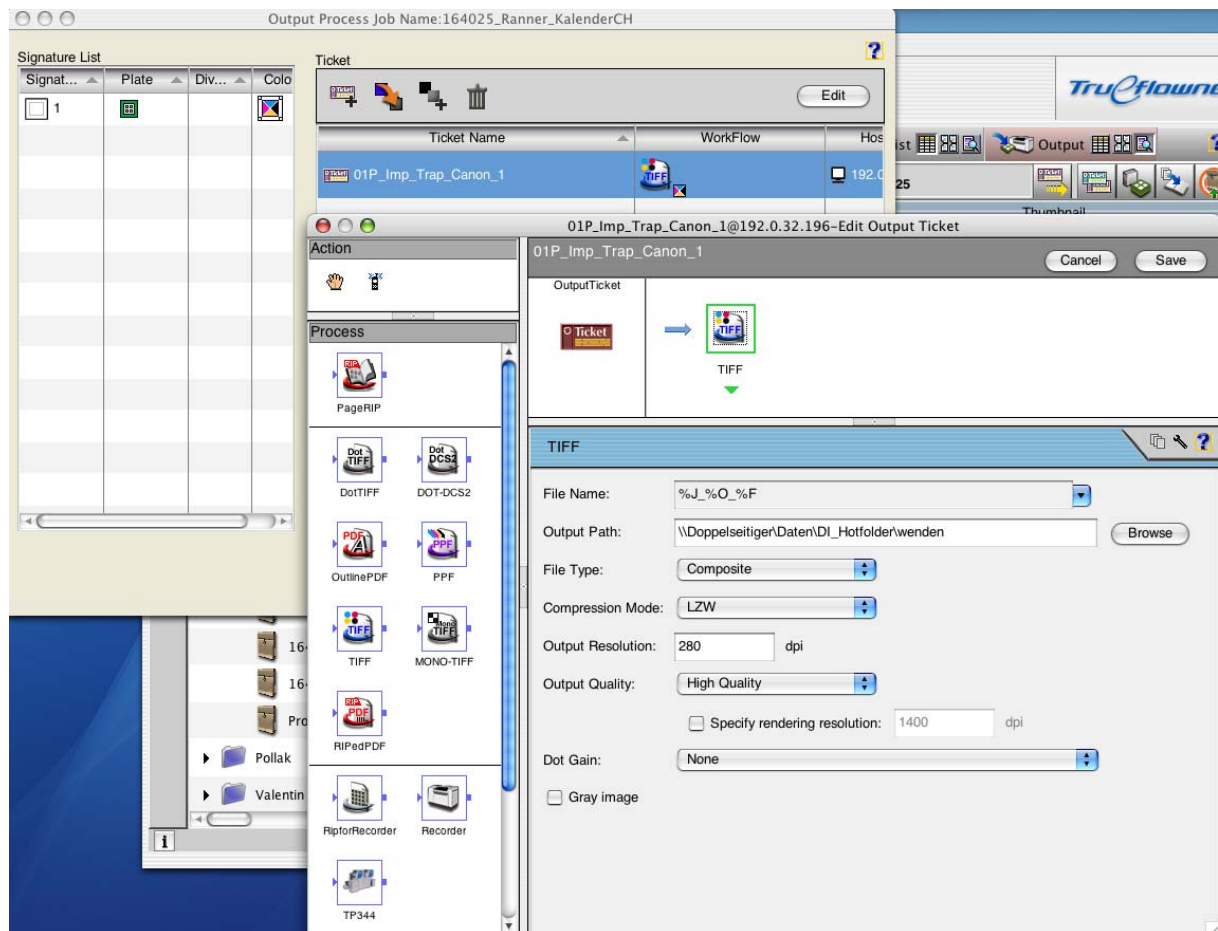


# Screen Trueflow 3.0

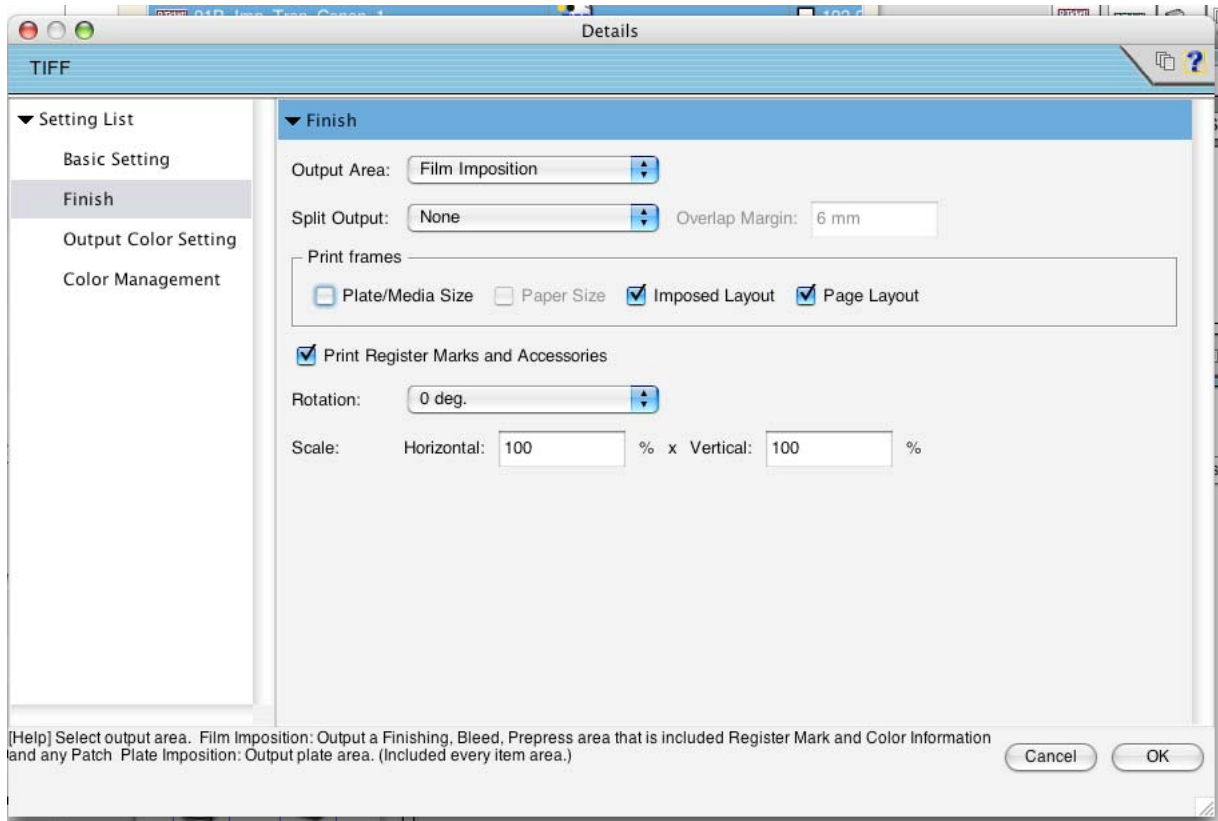
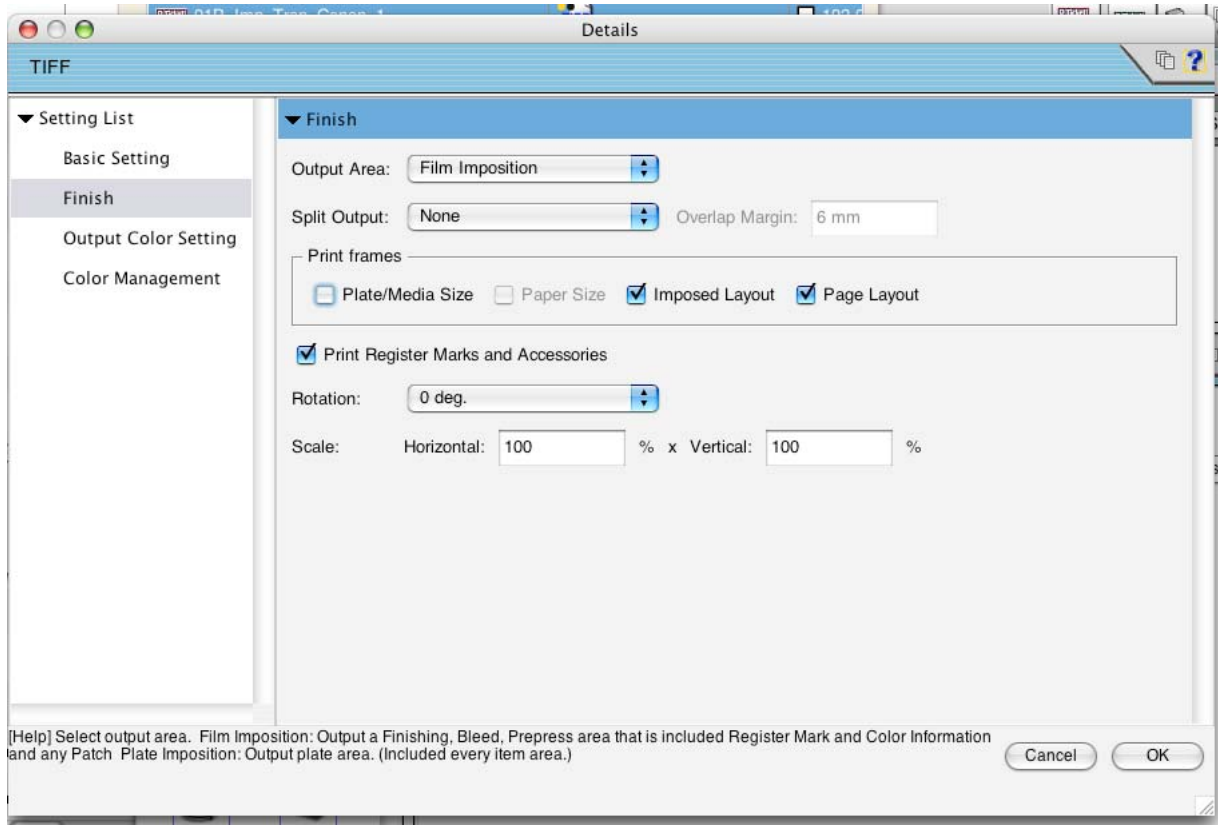
## Connection to DI-Plot for Preproofer

### 1. Create a Job Ticket with a TIFF output device.

Use the settings as shown in the preview. Change the Output path



## 2. Set the TIFF settings like shown in the screenshot



### 3. Setup in DI-Plot

Use the Input filter called TIFF CMYK

**DI - PLOT Parameters Conversion**

**INPUT**

Format:

Path:

Mirror:  Negative

Source File Treatment Joblist Refresh Interval  sec

**OUTPUT**

Format:

Path:

Modus:

Resolution: X  Y  dpi Colors:

Front/Back Enabled

Border Lines

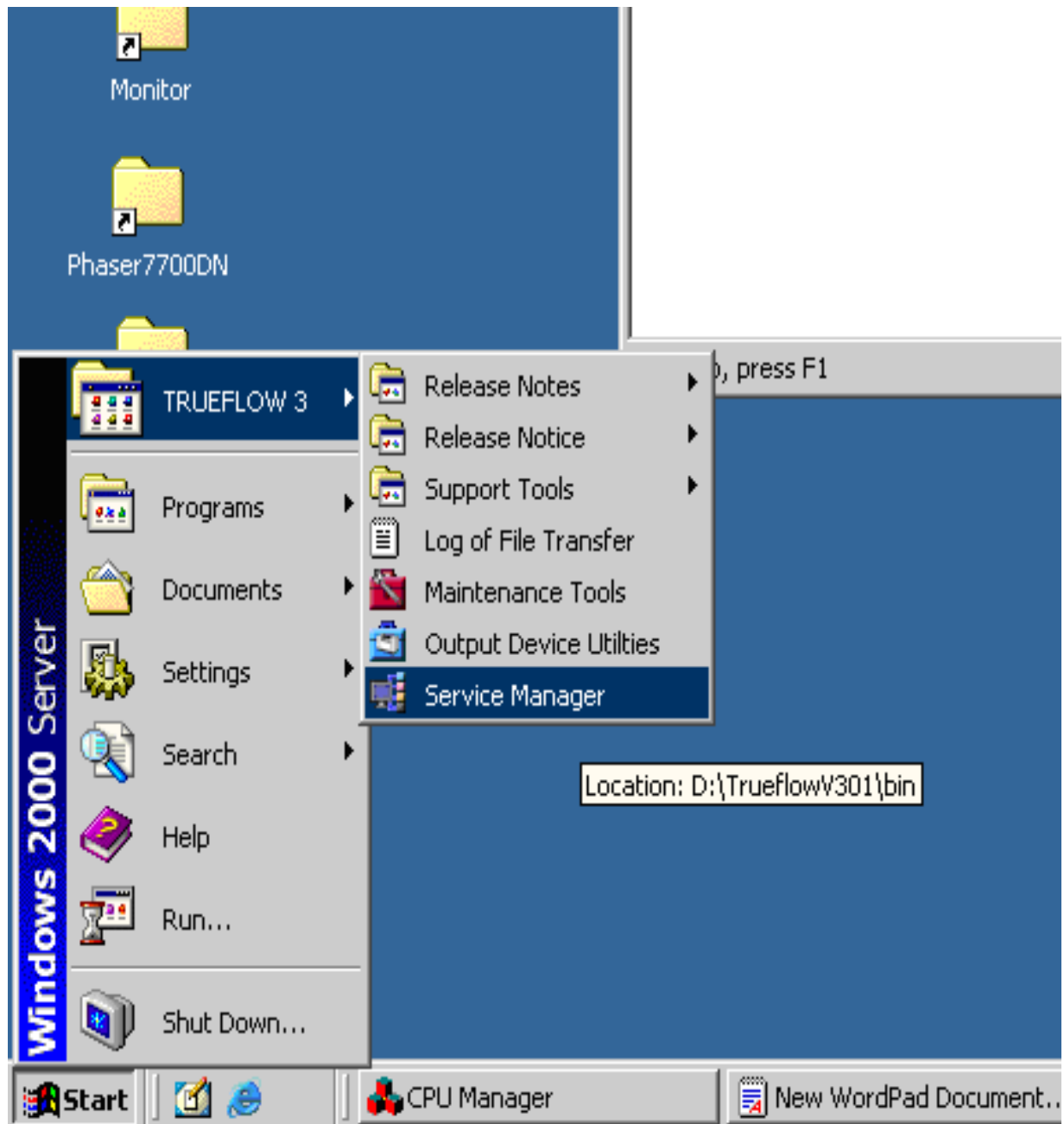
Add Out:

Unknown Spot Color Handling:

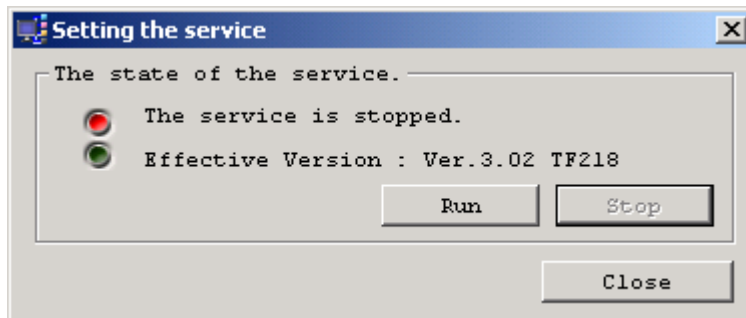
**OK**

# Add the file share into the workflow

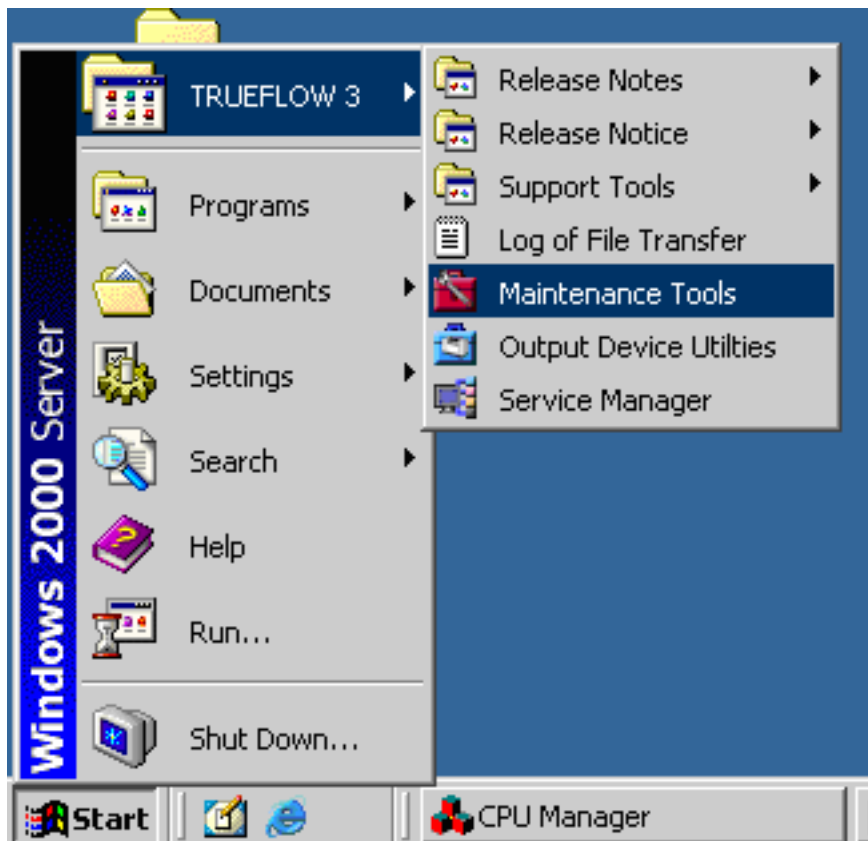
1. Open the Service Manager in the program menu:



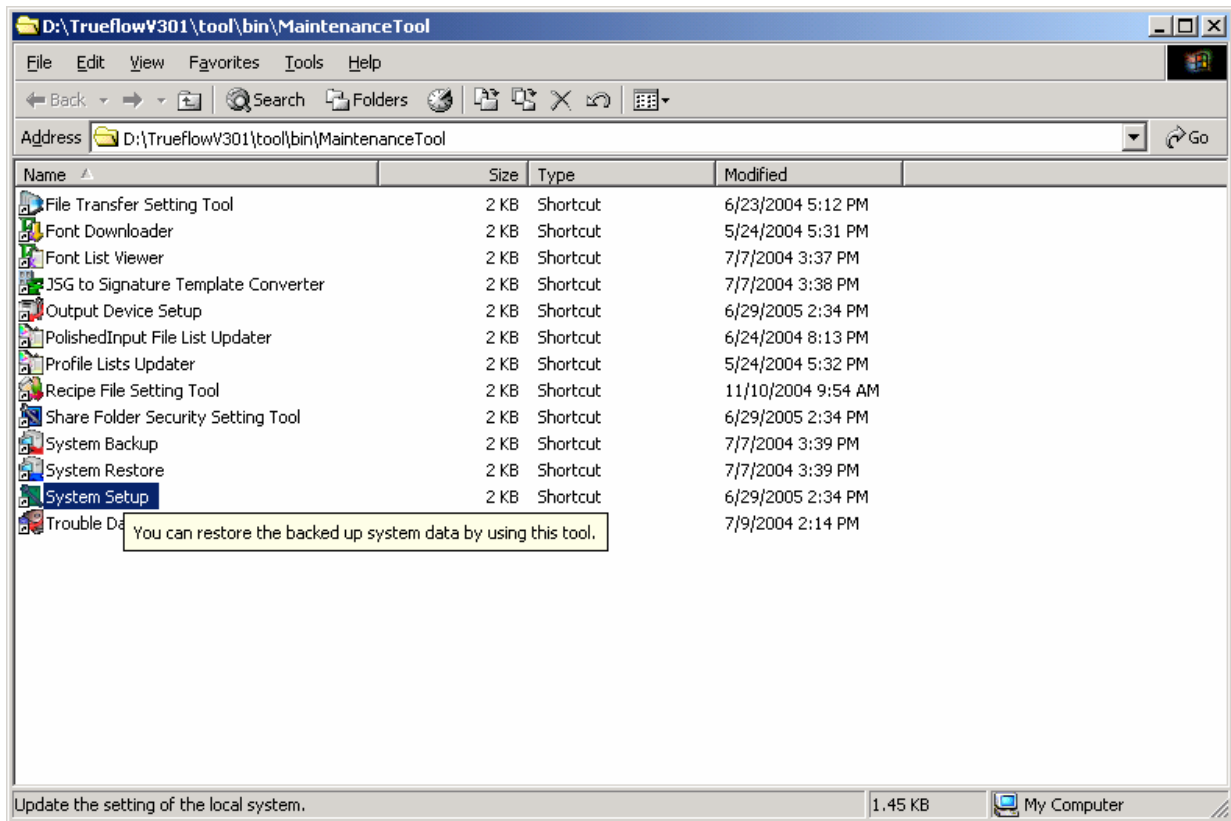
## 2. Stop the service



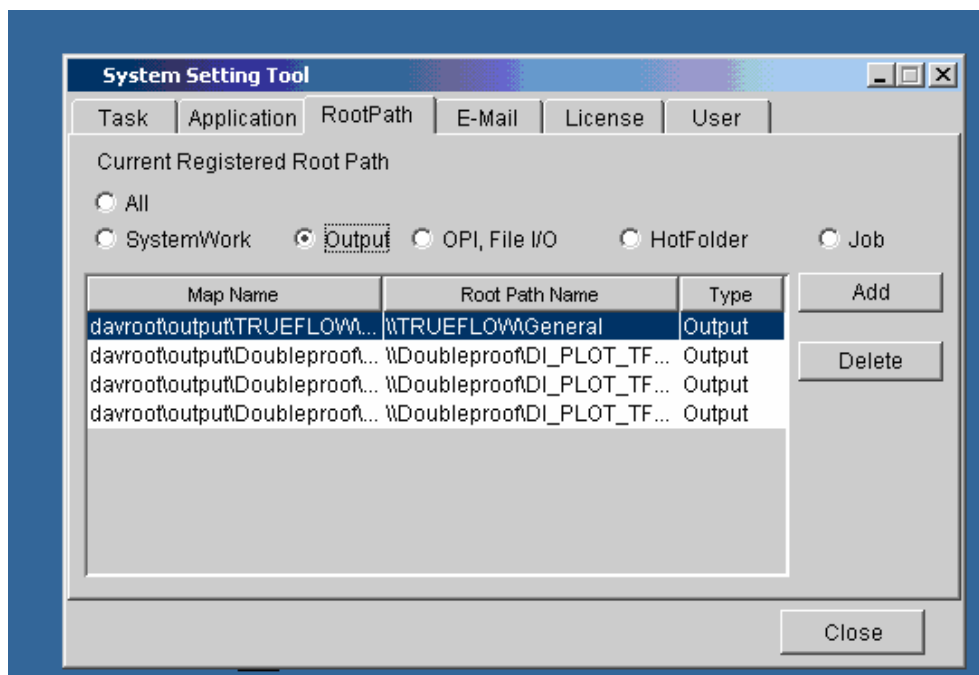
## 3. Open the Maintenance tools



#### 4. Start the System Setup



#### 5. Add the here the shared network drive from DI-Plot PC



## 6. Start the service

