

Preproofer 960

Installation Guide V9.0



This manual is propriety in nature and the sole property of Digital Information. It may not be reproduced , in whole or in part , without the express written permission of Digital Information. Digital Information reserves the right to modify and/or delete any material and / or capabilities described herein.

All the documentation in this manual is instructional and for the operation of Preproofer machine. Digital Information shall not be responsible for any damage or claims resulting from any errors or omissions in this manual.

Owing to our policy of continous product development, specifications , terms and description of Preproofer 960 are subject to change without prior notice.

Digital Information
Technoparkstrasse 1
CH-8005 Zurich
Switzerland
Telephone: + 41 43 818 2000
Fax: + 41 43 818 2009
Email: info@digiinfo.com

Original text by Jagdev Rehal
September 2001
Copyright ©2004 Digital Information

INTRODUCTION4

KEY FEATURES.....4

HOW DOES PREPROOFER WORK.....5

HOW IS DUAL-SIDED IMPOSITION PROOF MADE5

TOOLS REQUIRED FOR THE INSTALLATION.....6

MATERIALS REQUIRED FOR THE INSTALLATION6

UNPACKING THE BOXES.....6

ASSEMBLE THE SYSTEM.....7

HOW TO ADJUST NEW ANTI-CURLING BAR.....23

CHANGING SETUP PARAMETERS ON THE PRINTER.....24

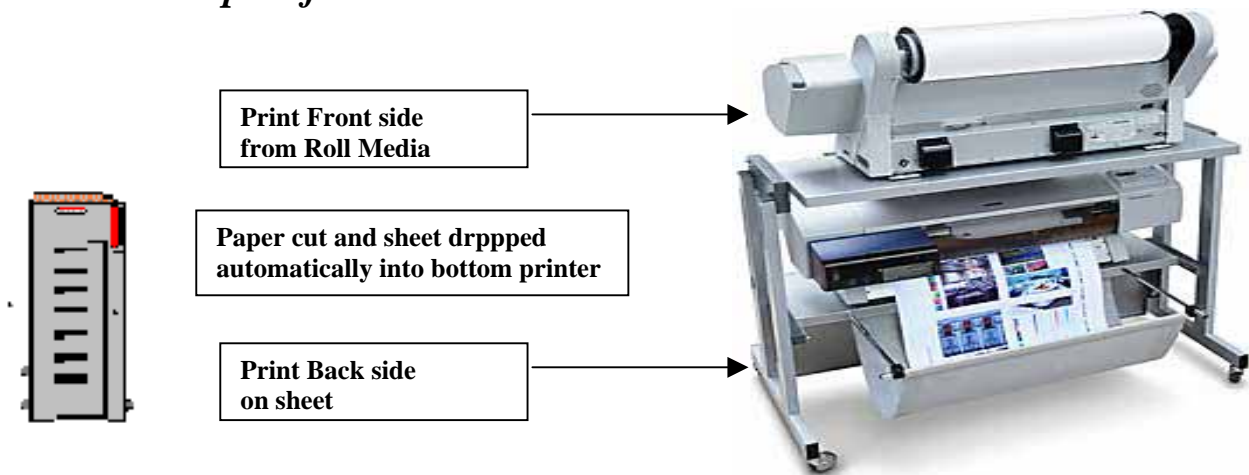
Introduction

The Preproofer 960 is a fully automatic system printing double-sided proofs in 8 Up format. The system is based on two Epson Stylus 9600 printing engines , enabling print widths of 106cm (42”) and height of up to 800 cm (32”).

Key Features

- Unattended, automatic operation
- Simple and inexpensive Add-on to your new or existing
- High quality, accurate double-sided imposition proofs
- Works freely between single sided work or double sided work.
- High production - 8 proofs per hour
- Interfaced to almost all Rip workflows in the Prepress industry

How does Preproofer work



Rip Station with Diplot software

Preproofer 960

How is dual-sided Imposition proof made

1. Data for the Front side is printed on Roll dual-sided media.
2. Paper is cut by the printer , now a sheet and the duplexer turns the sheet.
3. The Sheet is dropped into the bottom printer
4. Data for reverse (verso) side is printed.
5. The sheet is ejected

ALL THE ABOVE STEPS ARE FULLY AUTOMATIC, ALLOWING FAST PRODUCTION OF DUAL-SIDED PRINTING WITHOUT OPERATOR INTERVENTION.

Tools required for the Installation

Standard Screwdriver set
Allen keys set
Set of spanners 10-15 mm
Phillips Screw driver set
Measurement Tape
Cordless drill to unpack the boxes

Materials required for the Installation

Local Power cord (*not supplied*)
US Power supply for Interface Box (*not supplied for USA*)
Thin dual-sided tape to fix the film foils in bottom printer (*not supplied*)
Serial cable to the PC (*not supplied*)

Unpacking the Boxes

Make sure the following parts are available, after unpacking the cases:

Large case:

- 2 side Legs
- 2 Shelves
- 2 Cross beams
- 1 anti-curling device
- 2 side media guides for roll
- 1 set of film foils
- parts for the basket (can be attached under the shelves)

Small case:

- Curver
- Interface Box
- Power supply (option)
- Serial cable (option)

All packaged items must be inspected at the customer's site before unpacking begins. The following steps are taken when there has been damage:

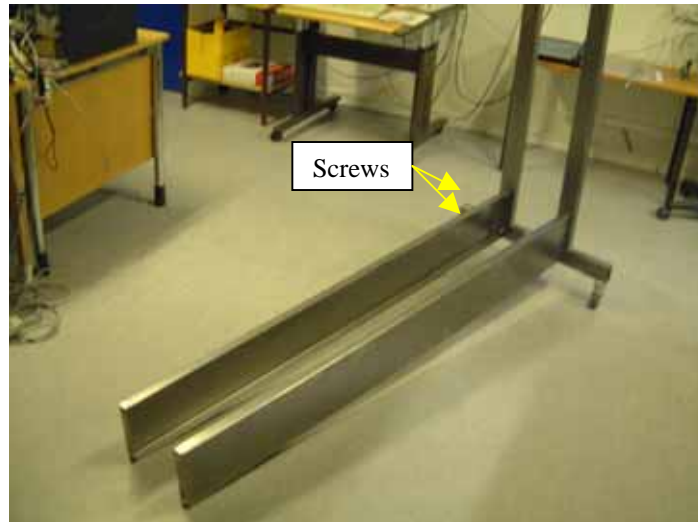
1. Record the observations on the delivery documentation.
2. Inform the carrier, shipping agent and insurance agent.

Units may be removed from their box only by an approved engineer or representative. Do not proceed with unpacking when there has been a damage report until authorized by the shipping and insurance agents.

Assemble the system

Assemble the stand as described in steps 1 to 6. If the stand comes premounted, please proceed to step 7.

1. Start building the stand from the bottom upwards. Insert the back cross beam and screw it onto the right leg . Top screws are screwed from inside the cross beam and the bottom screws are screwed from outside the leg. Follow the same procedure for the front cross beam.



2. Screw both the cross beams onto the right leg.



3. Screw the lower shelf bracket. All Screws are screwed from outside the leg and tightened with washer and nut on the inside of the leg:



4. Insert and screw the top cross beam as shown below:



5. Screw the Upper shelf bracket. All Screws are screwed from outside the leg and tightened with washer and nut on the inside of the leg:



6. Slide the lower and upper shelves onto the respective brackets. The completed stand looks as below:



7. The assembled stand should look as below:



8. Remove the black plastic guides inside BOTH the Epson machines (7 pieces in each machine), (2 screws in each guide). A small cross screwdriver (length approx. 5 cm) is needed to unscrew these screws. Note that one of the screws in the plastic guide on the left is difficult to access. In order to remove this guide, please remove the small plastic cover first.

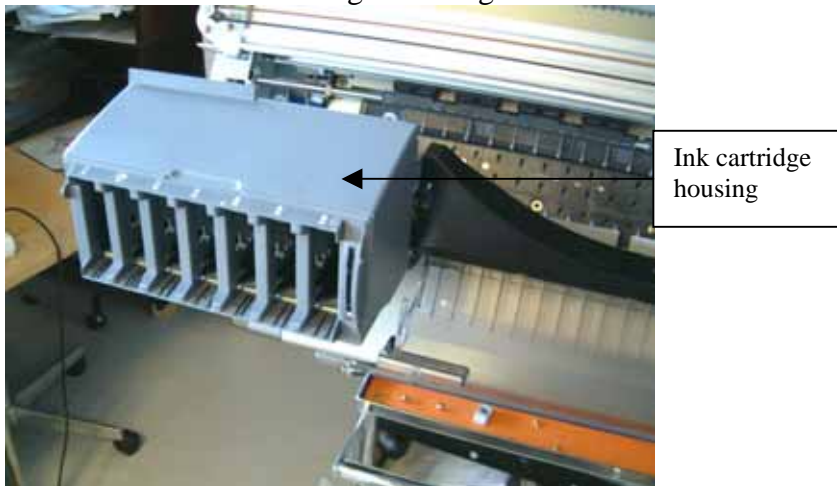


9. Remove the anti-static brush in the Lower printer as below:

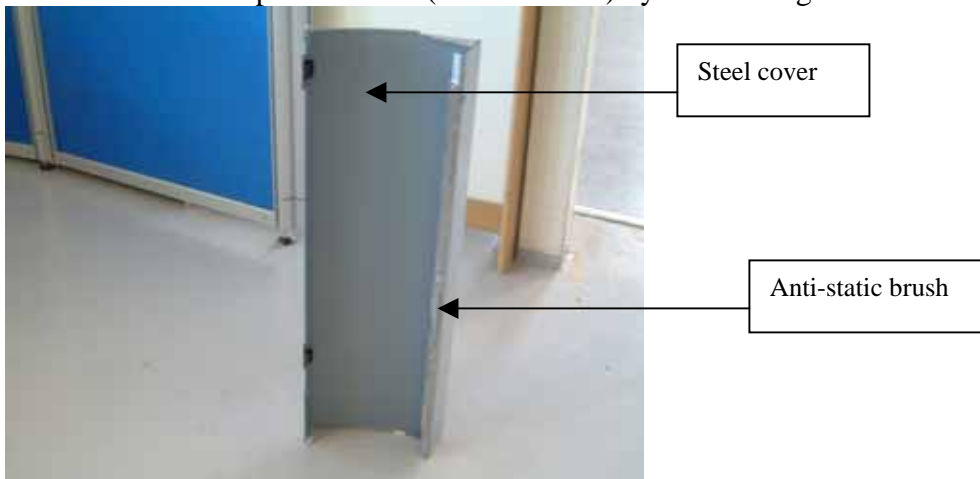
- Remove the left and right side covers sideways .



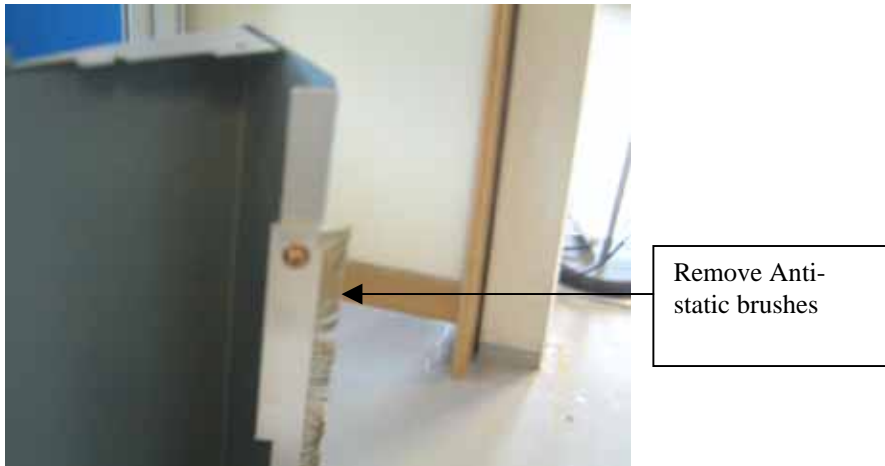
- Remove the ink cartridge Housing



- Remove the top steel cover (silver colour) by unscrewing 2 screws on each side.



- Remove the anti-static brushes by unscrewing them from the steel cover:



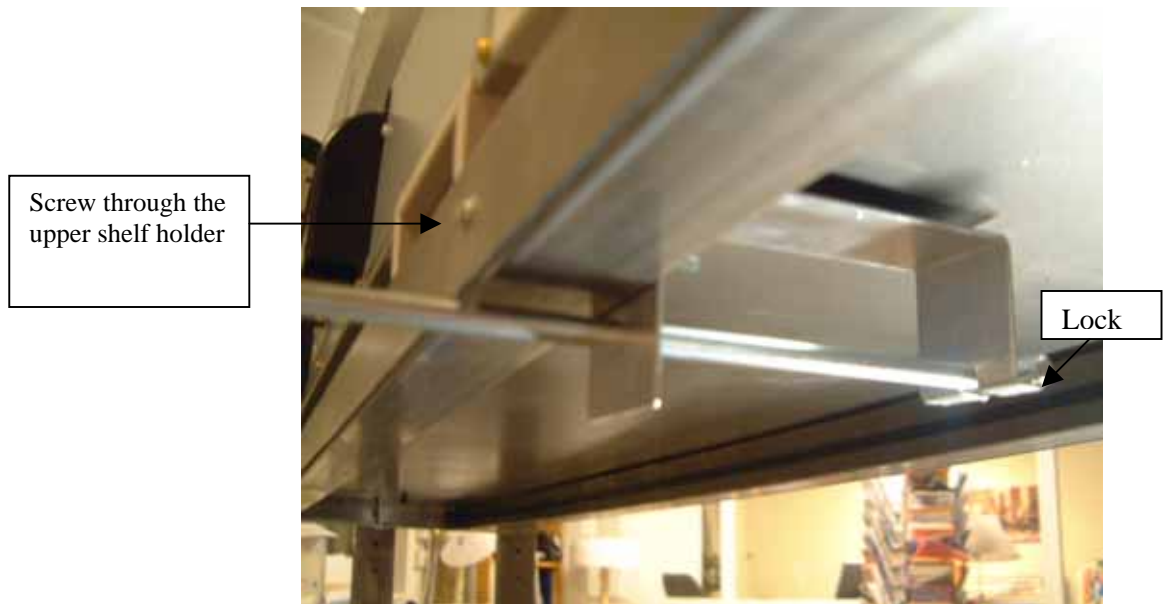
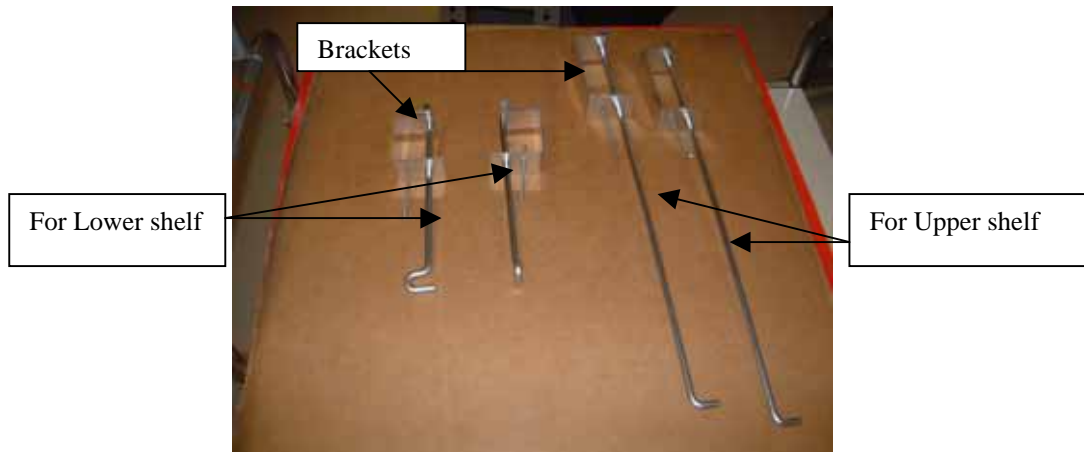
- Reassemble the top steel cover, Ink cartridge housing and side covers.
10. Position the Bottom Epson Printer on the bottom shelf with the threaded hole on the printer bottom plate aligned over the shelf hole. Insert the screw through the shelf and thread it loosely on both sides of the printer.
 11. Position the Top Epson Printer on the top shelf with the threaded hole on the printer bottom plate aligned over the shelf hole. Insert the screw through the shelf and thread it loosely on both sides of the printer.



12. Mount the 4 side basket rods underneath the upper and Lower shelf as shown below:

Start by inserting the rods through the brackets as shown below:

Note: The basket rods come with Epson machines !!!!!!!

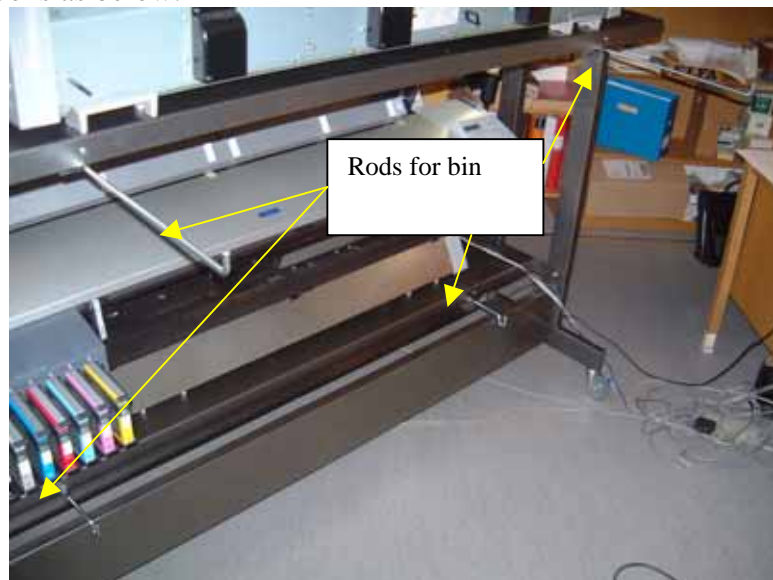


Make sure the back end of the rod is locked inside the bracket

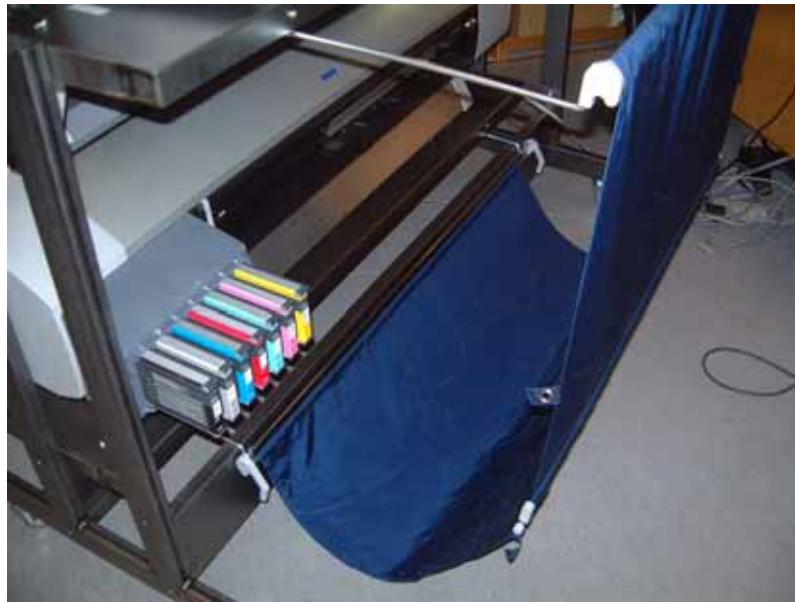
13. Mount the side basket rods underneath the Lower shelf as shown below:



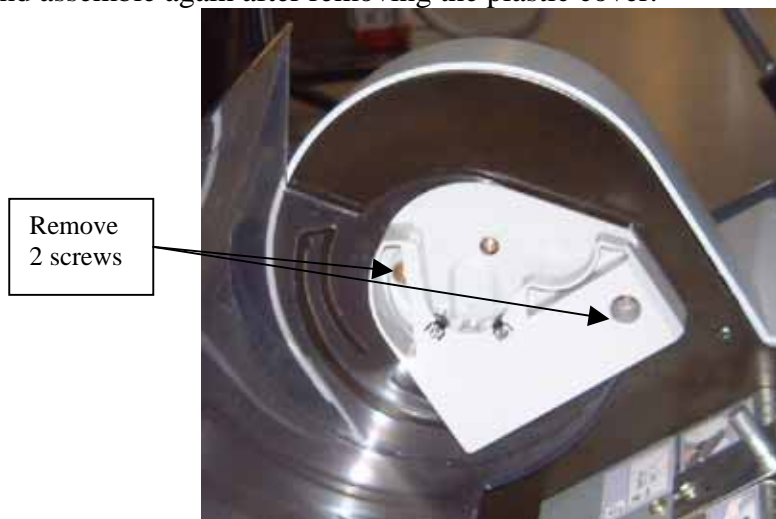
All the 4 rods looks as below:



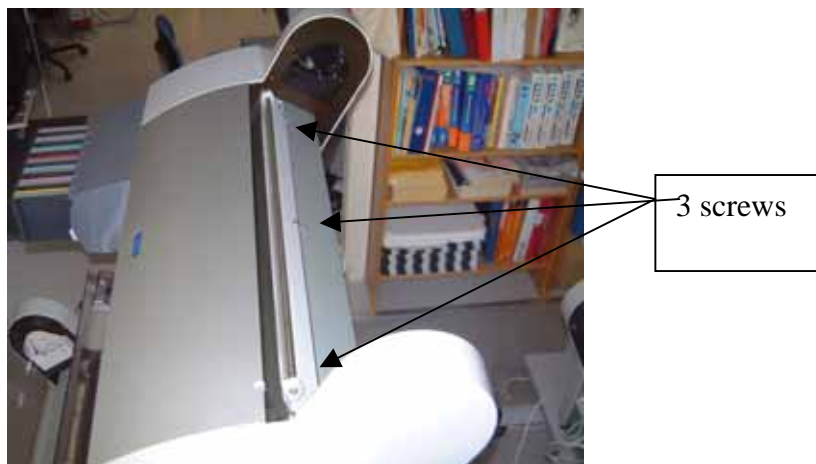
14. The bin should look as below:



15. Remove the roll media plastic cover on the Top printer by removing 2 screws on each side and assemble again after removing the plastic cover.



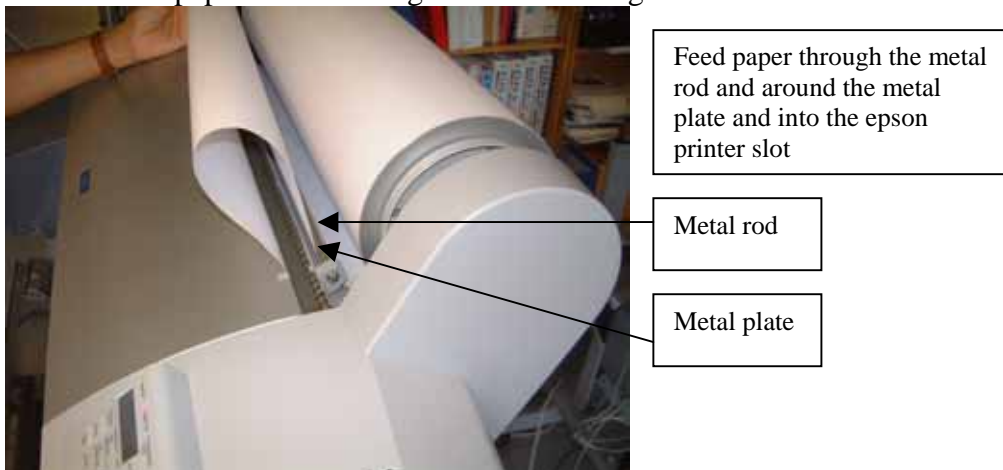
16. Install the anti-curling bar on the top printer by fixing onto the 3 existing screws:



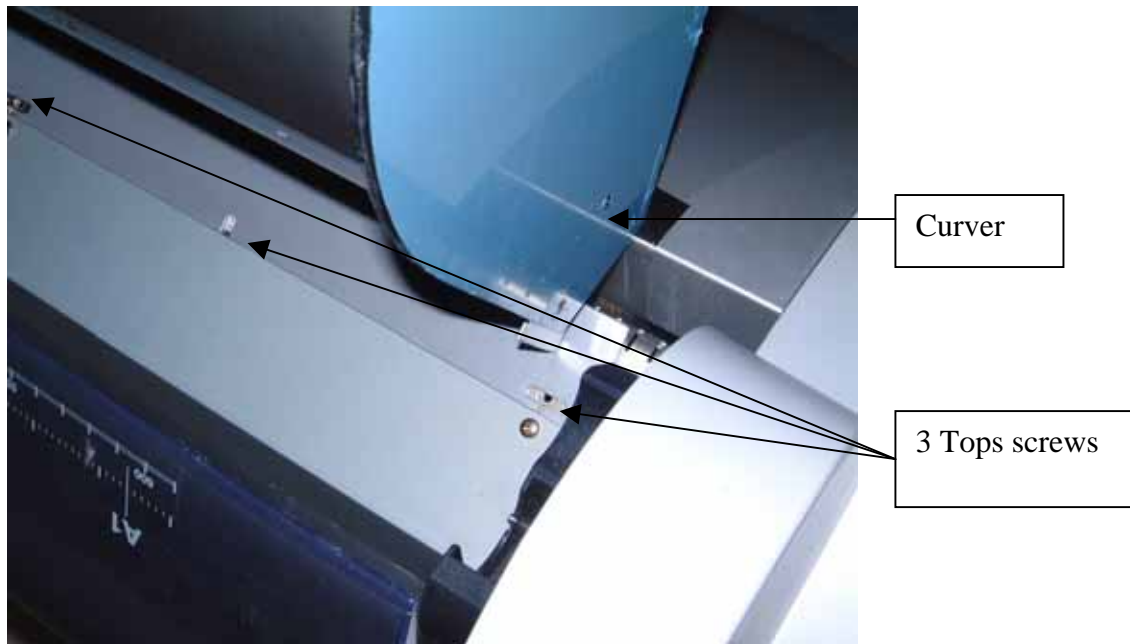
17. Insert the 6" media side guides onto the roll media spindle. Load the roll media paper edge coming under the spindle and towards you (**VERY IMPORTANT!**):



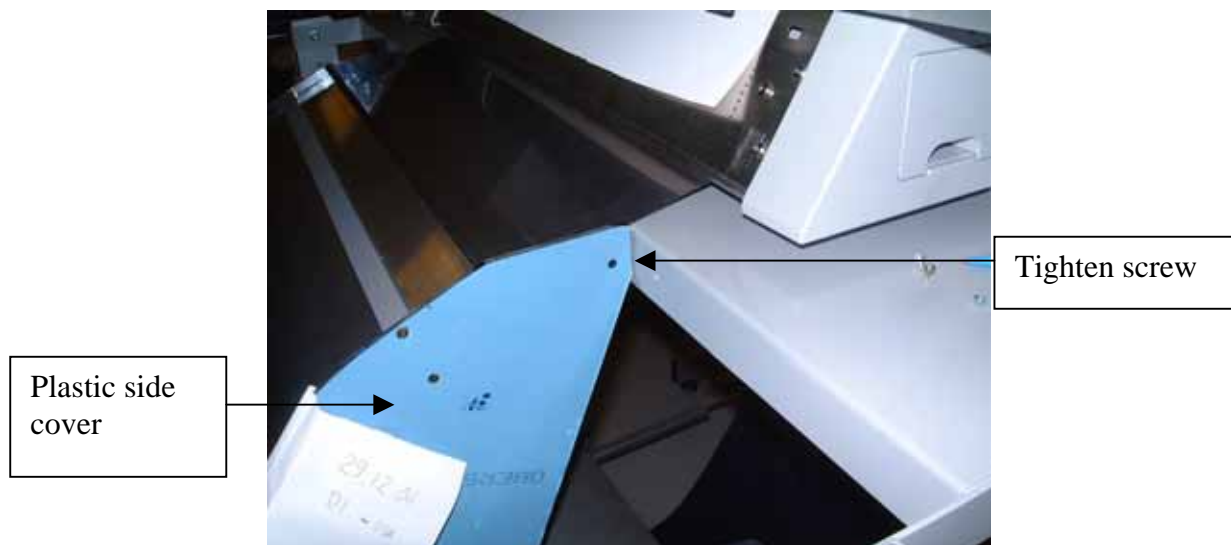
18. Load the paper media through the anti-curling bar as below:



19. In the lower printer, remove the media roll and loosen the 3 top screws . Insert the curver guide and glide it sideways and tighten the screws. The bottom end of the curver should be resting on the edge of the bottom shelf.



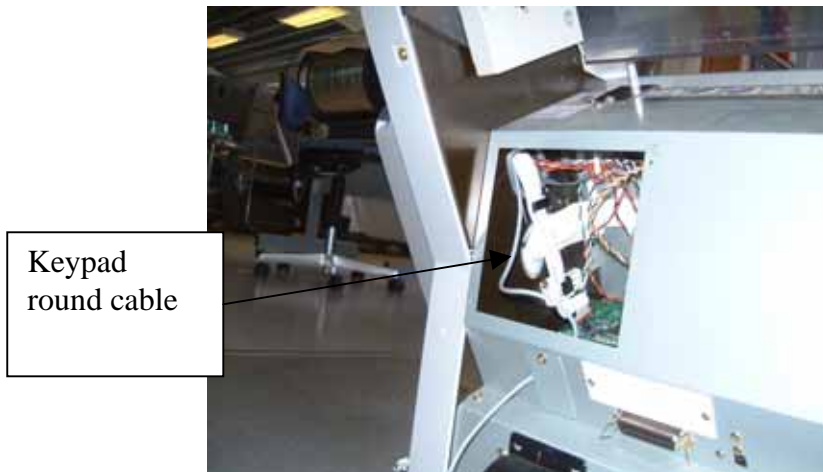
20. Fix the top half of the curver by screwing the side plastic plate into the angular bracket. The latter is fixed on the top shelf.



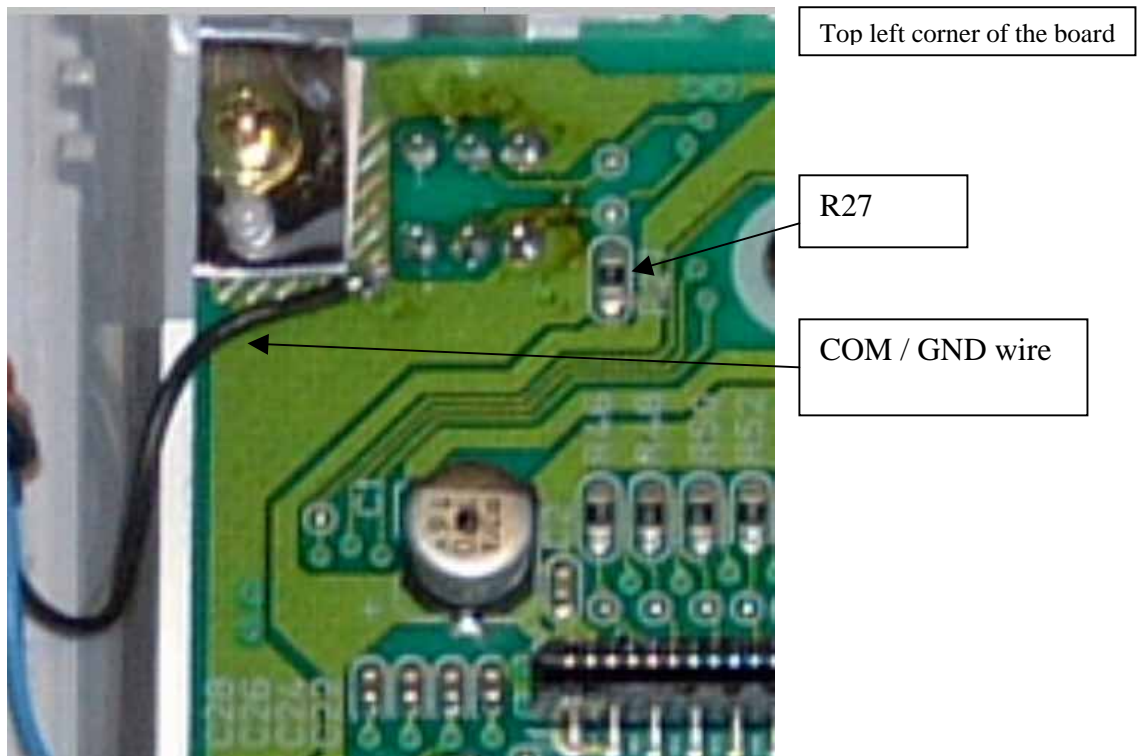
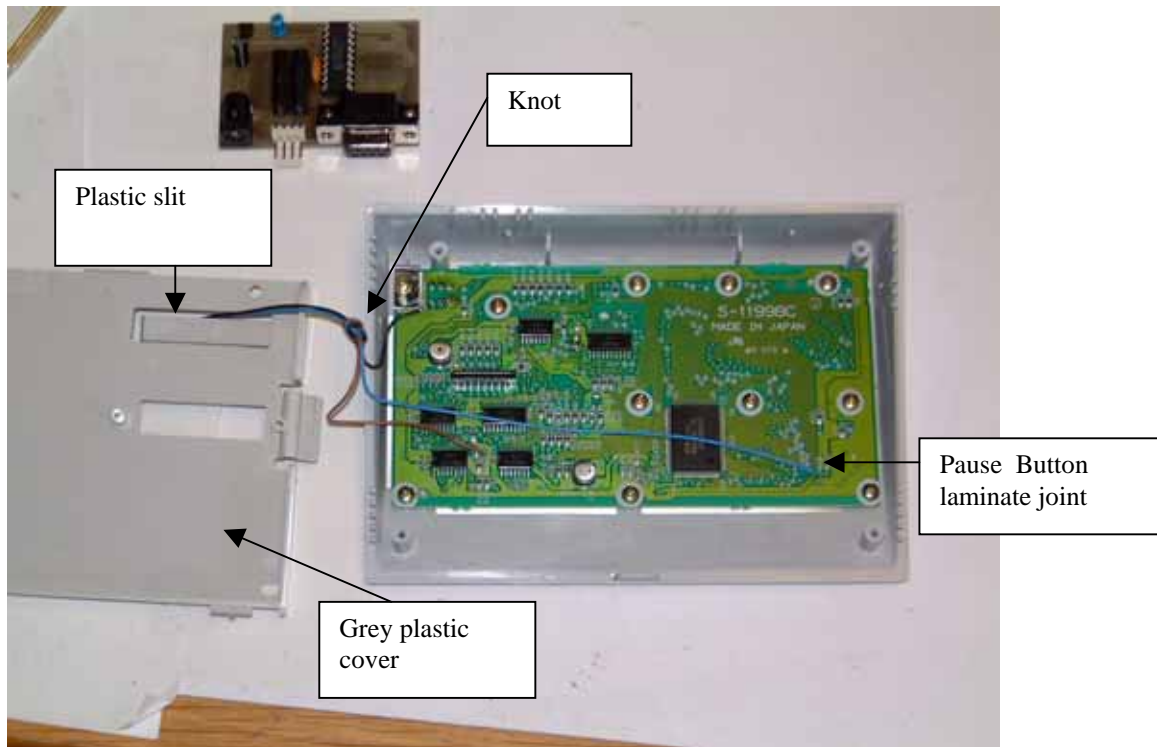
21. Switch off the bottom printer and remove the Power cord. Lift up the keypad slightly pressing on the sides and gently pressing on the plastic hook with a screwdriver.

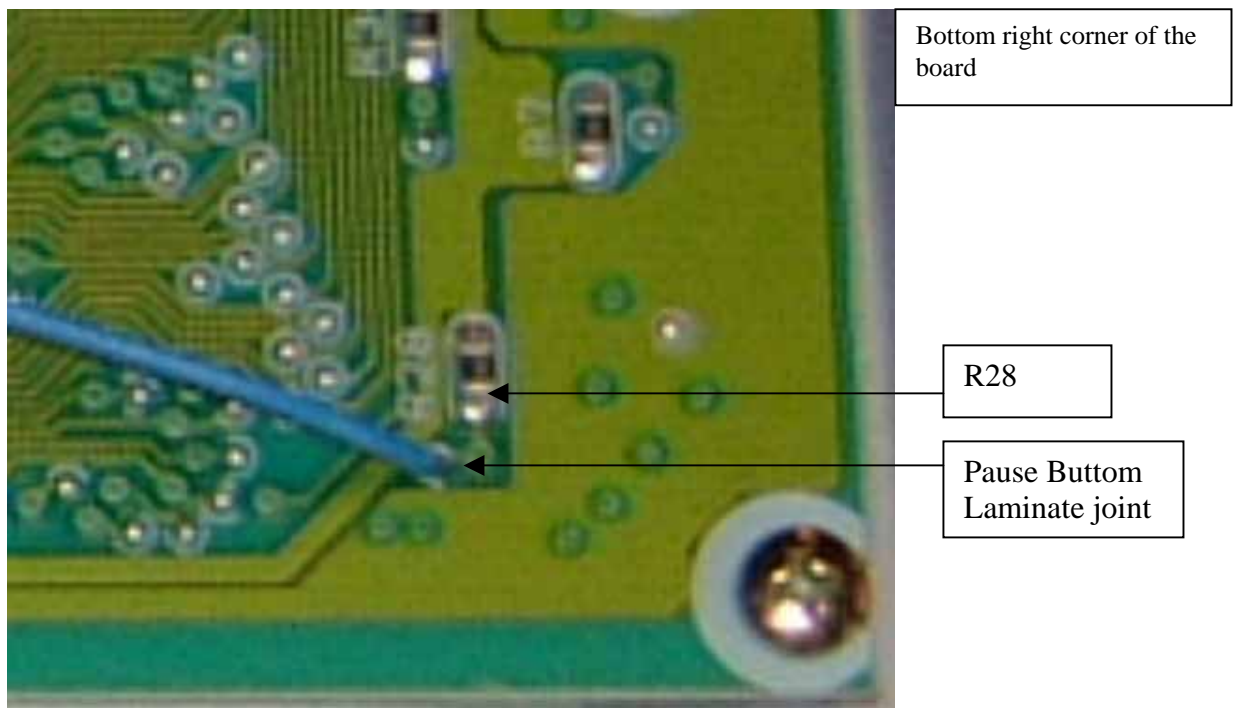
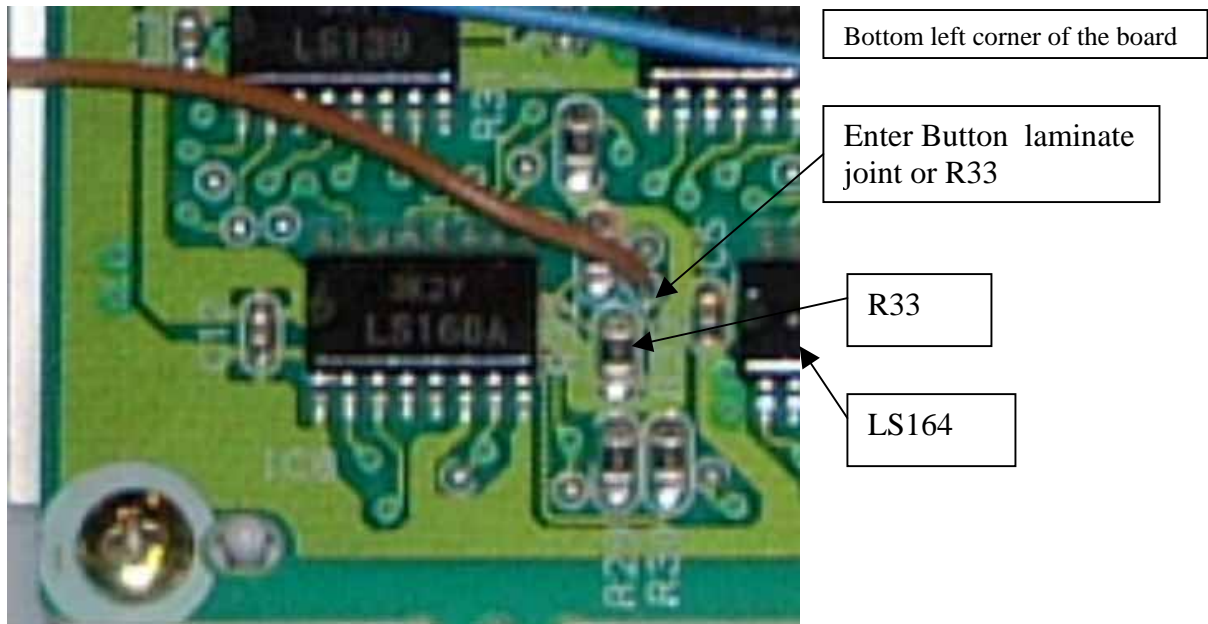


22. Remove the back plate cover and feed the round keypad cable up to the keypad opening:



23. Turn the keypad upside down and remove the grey plastic cover. Insert the cable through the upper plastic slit and tie a knot at a reasonable distance. Solder the 3 wires to the respective positions as shown below:



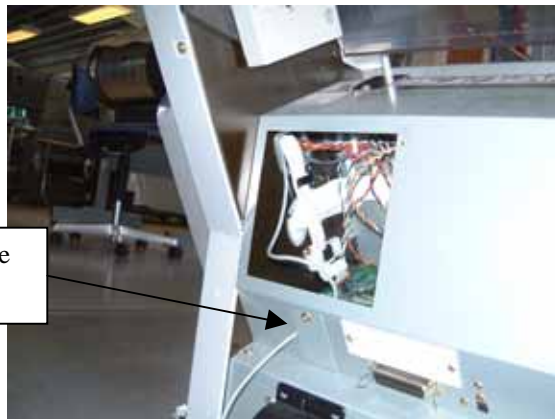


24. Reassemble the keypad and make sure the flat cable is behind the plastic holder. Feed the round cable down so that it does not interfere with the motor and the motor belt



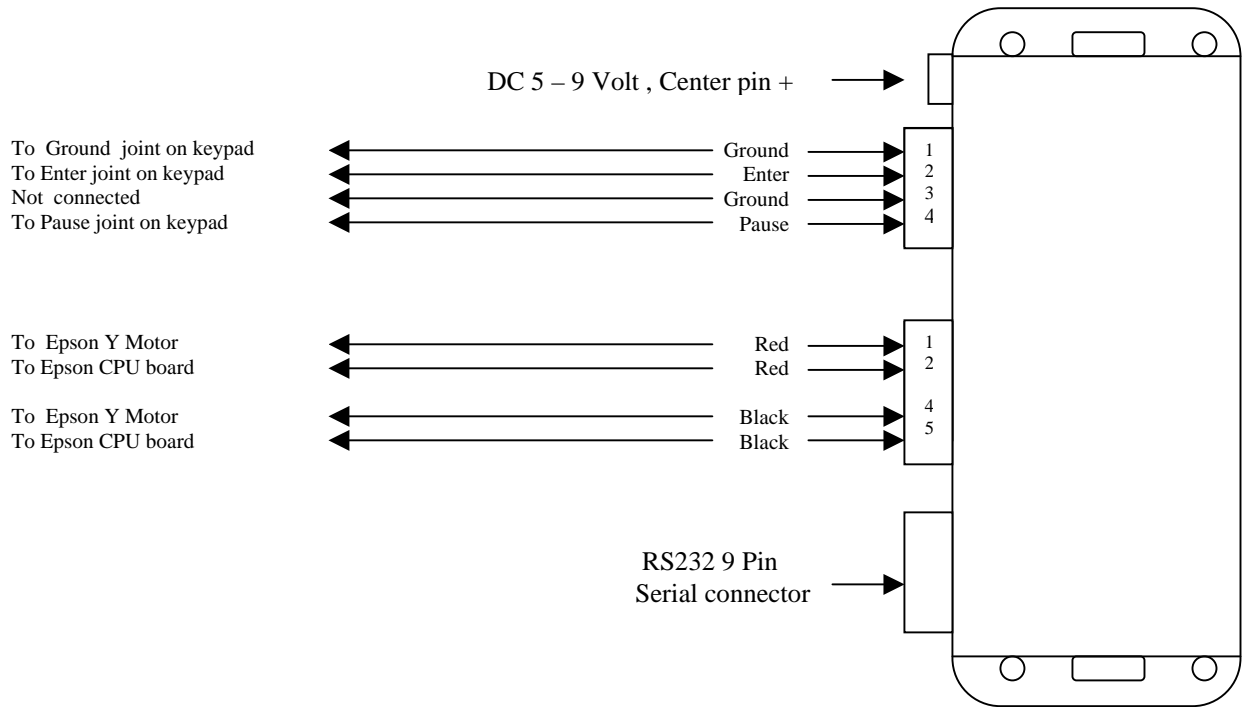
Round cable
feed on the side
and under the
motor belt

25. Feed the round cable though the small rectangular opening and refix the plate :



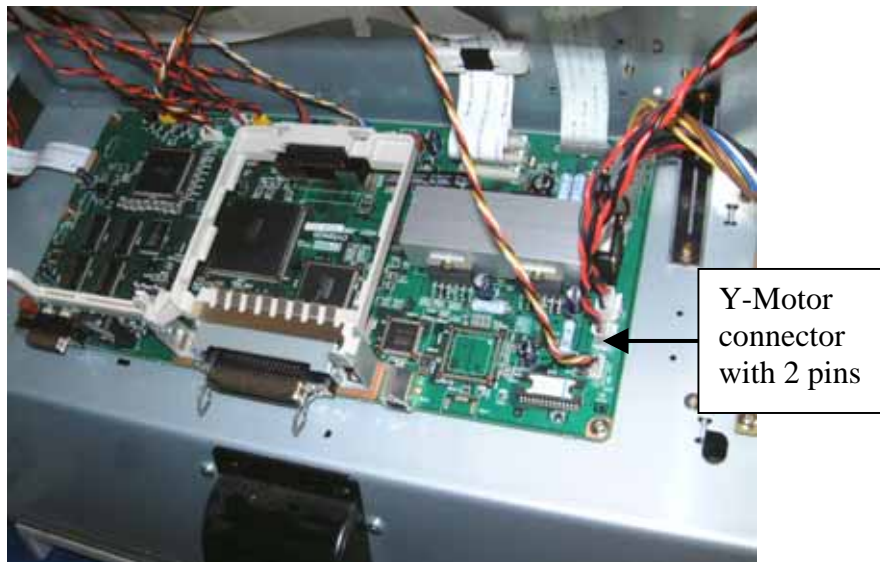
Round cable
refixed

- 26. Reclick the keypad very carefully .
- 27. Connect the Power supply to the Interface Box.
- 28. Connect the keypad cable (4 pin plug) to the Interface Box and the wires should look as below:



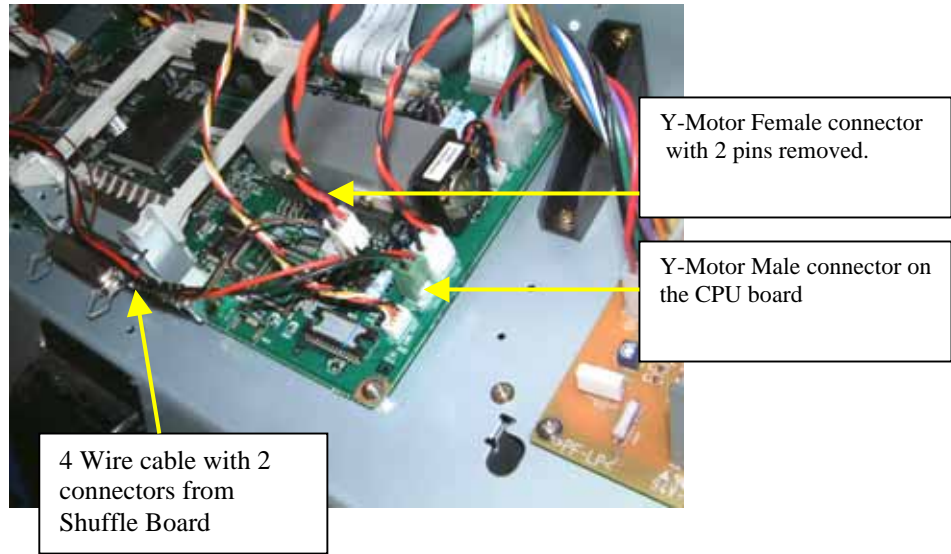
Seen from the top with components facing up

29. Disconnect the Y-Motor connector with 2 pins.



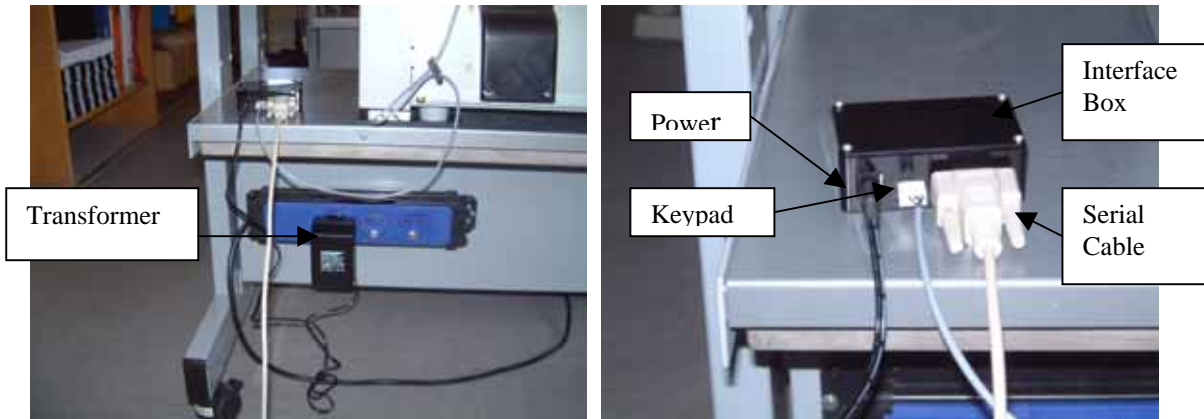
30. Connect first 2 wire Male connector to the Y-Motor Female connector. Make sure red wire is connected to the red wire.

31. Connect the second 2 wire Female connector to the Y-Motor Male connector sitting on the CPU Board. Make sure red wire is facing the direction to the fan.

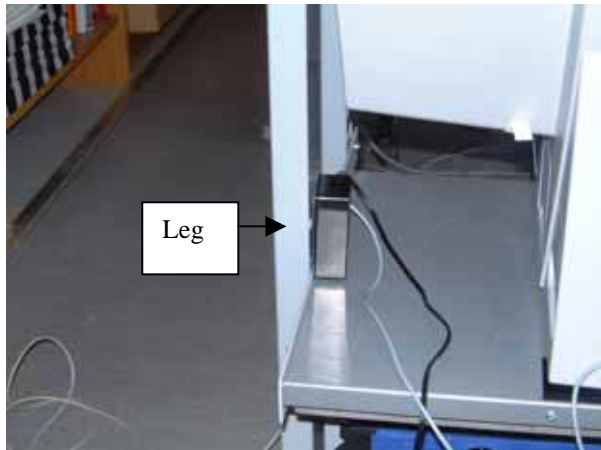


32. Connect the cable with 4 pin connector (2 red and 2 black wires) to the middle connector of the Shuffle Box.

33. Connect the 9 pin serial cable to the connector on the Box



34. Fix the Interface Box to the side of the leg:



35. Align both the printers by untightening the screws and moving the printers in both X and Y directions. Tighten the screws on the locking devices in order to fix the printers.
Please note that these locking devices are prefixed from the factory.
36. Attach serial cable from COM1 to the Epson interface Box.
37. Attach the power cords to both the printers.
38. Attach the usb or network cables.
39. Switch on both the printers.

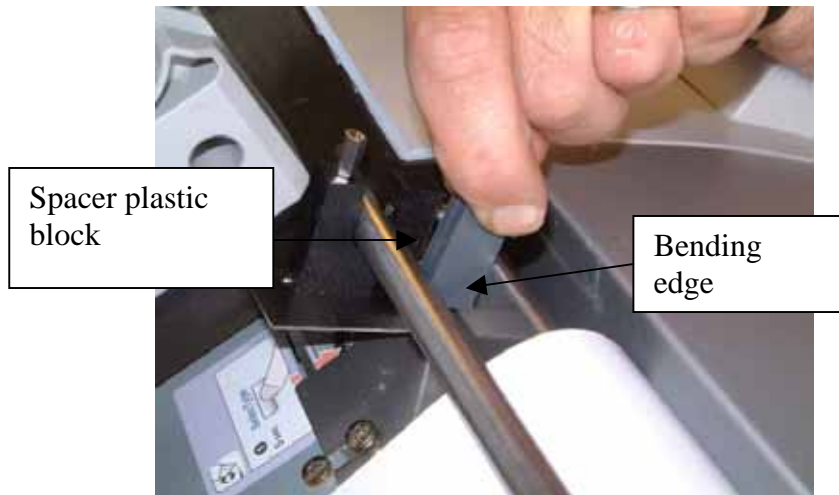
How to adjust NEW Anti-curling Bar

There are 2 screws to adjusting the anti-curling bar when using different types of media:



For Semi-matt paper roll (170g) , adjust the anti-curling bar as follows:

1. Loosen Top Screw
2. Insert the spacer plastic block with width of 13 mm in between the bar and the bending edge.
3. Tighten the Top Screw.



For matt paper roll (100g) , adjust the anti-curling bar as follows:

4. Loosen Top Screw
5. Insert the spacer plastic block with width of 7 mm in between the bar and the bending edge.
6. Tighten the Top Screw.

Changing Setup parameters on the Printer

Set the “platen gap” on the lower machine to “narrow” as below:

1. Press the **SelectType** button until **PRINTER SETUP** appears on the display.
2. Press the **▶** button twice. The display shows the current setting for the platen gap.
3. Use the **▲** and **▼** buttons to change the setting. (**STANDARD** is the default setting; you can also choose **NARROW**, **WIDE**, or **WIDER**.)
4. Press the **Enter** button to save the new setting.
5. Press the **Pause** button to exit the menu.

If you've selected a non-standard platen gap, the letter **N** or **W** appears in the corner of the display to remind you of the narrow or wide setting. When you switch media, don't forget to change the setting back to **STANDARD**.

Well done! End of Installation